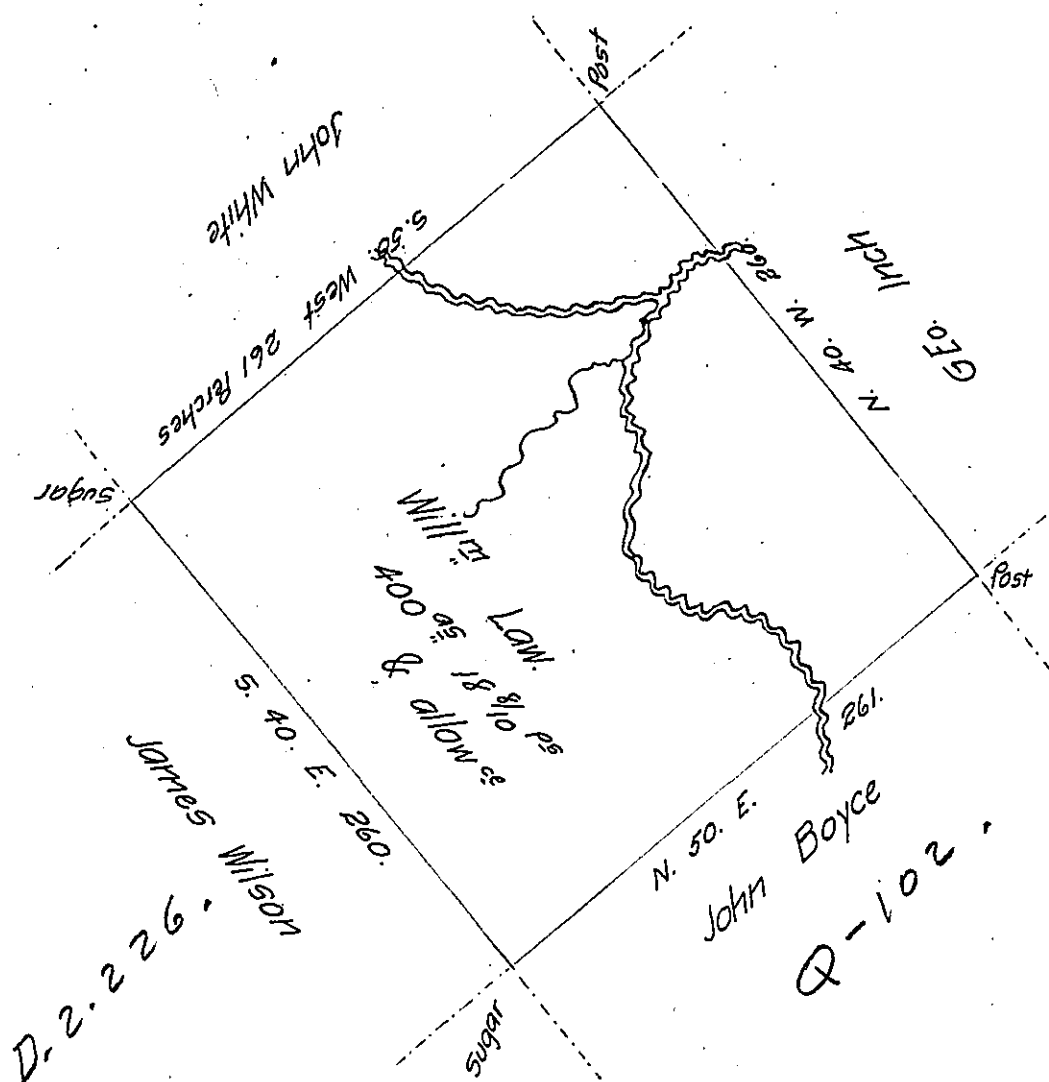


X



A draft of a tract of land called — Situated adjoining land of James Wilson and others on the waters of Mahopany (obliterated) the County of ~~Northumberland~~ Luzerne containing four (obliterated) Acres and eighteen & eight tenths perches and allowance (obliterated) for William Law the tenth day of April A.D. Seven (61) Hundred and Ninety three by William Montgomery D.S. my predecessor by virtue of a warrant dated the twenty sixth day of February 1793 as appears by the original Draft in my office which Survey I have examined and corrected.

John Bennet (obl)

Richard T. Leech Esquire }  
 Surveyor General }

July 29-1814

IN TESTIMONY that the above is a copy of the original remaining on file in the Department of Internal Affairs of Pennsylvania, made conformably to an Act of Assembly approved the 16th day of February, 1833, I have hereunto set my Hand and caused the Seal of said Department to be affixed at Harrisburg, this tenth day of October 1905

*George B. Ross*  
 Secretary of Internal Affairs.